



Clinical IS Update

Topic: INSPECT Opioid Tool – Residents
Facility: IU Health and Union Health Facilities
Audience: Residents

Effective Date
January 2, 2019

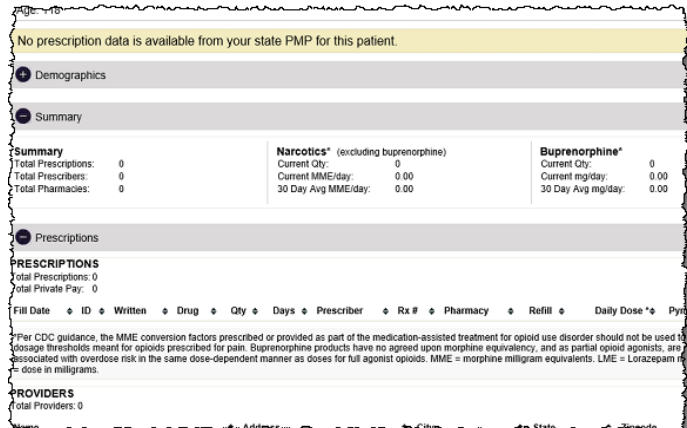
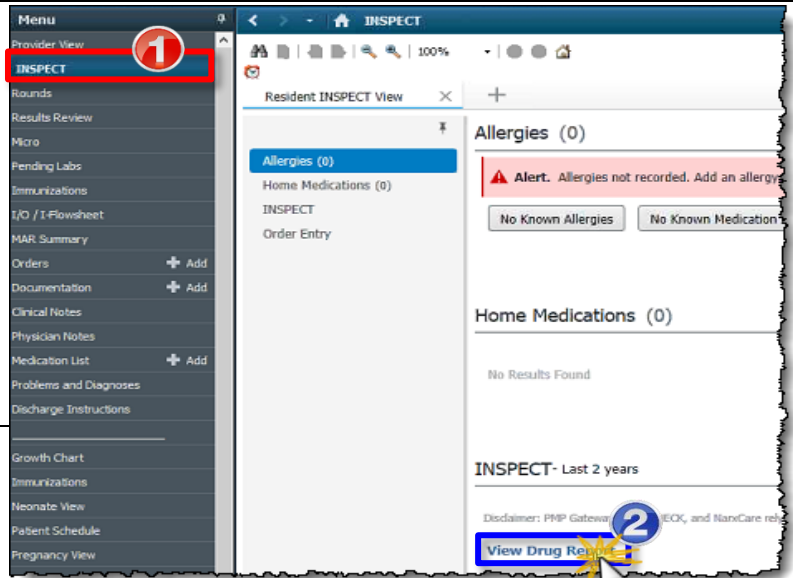
Contact
IU Health Help Desk
helpdesk@iuhealth.org

Overview: A newer version of the INSPECT Opioid tool has been added as a component on the Workflow MPages. This changes the workflow slightly for those using this system. Instead of using an external link, users now use an MPage to access the tool. The newer version provides multi-state data, rather than just data for Indiana (as provided by the old version).

Note: Residents must be able to access INSPECT at *all locations* during their rotation.

Legal Implications: For prescribers from Emergency Departments and Chronic Pain Clinics and for those who have INSPECT integrated into their EMR, it is Indiana state law that you must view the INSPECT report prior to writing for a controlled substance.

Step	Action
1	<p>Click on INSPECT band of the Table of Contents.</p> <p><i>The Resident Workflow displays in the View pane. Allergies, Home Meds, INSPECT, and Order Entry may also be completed from here.</i></p>
2	<p>Click View Drug Report, located within the INSPECT section.</p> <p><i>The Drug Report displays.</i></p>
3	<p>Close report once reviewed.</p>



Continued on next page

The Best Care, Designed for You – Utilizing Excellence in Clinical IS Education



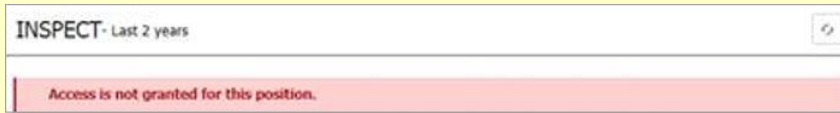
Clinical IS Update

Notes:

- A message indicating the system does not currently have a required identifier or license (NPI or DEA) on file for the user may display after clicking on the INSPECT component. If this appears to be an error, please contact **Helpdesk: (317) 962-2828**.



- A message indicating only Prescribers have access to the report may display after clicking the INSPECT component. Non-Prescribers will see the following message:



Reference:

- Please reference the INSPECT Overview video for more information: [INSPECT Overview](#)